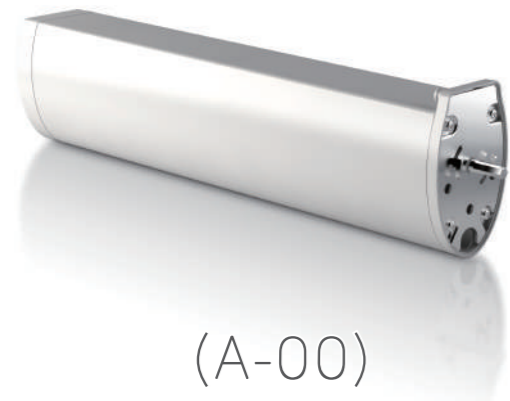
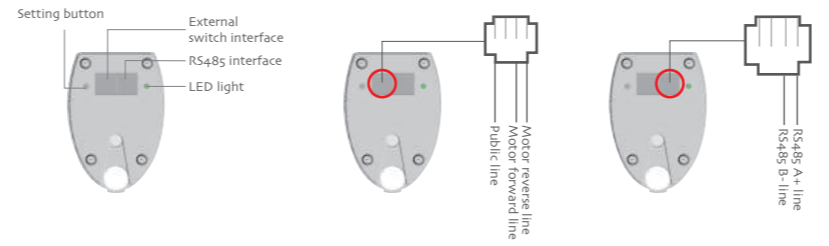


# AC CURTAIN MOTOR- DT72EV Specification

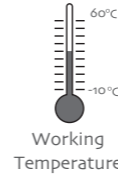


## Product introduction



### Functional features:

- Electronic memory limit function
- Resistance and stop function
- Limit memorized after power off function
- External switch control
- Can adjust the limit point manually
- Touch-start
- RS485 control

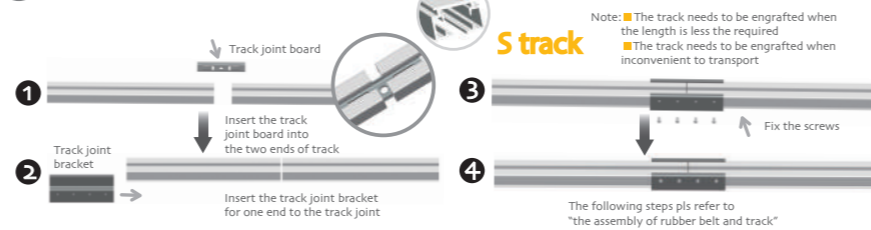


Parameter (More models and parameters are subject to the nameplate)

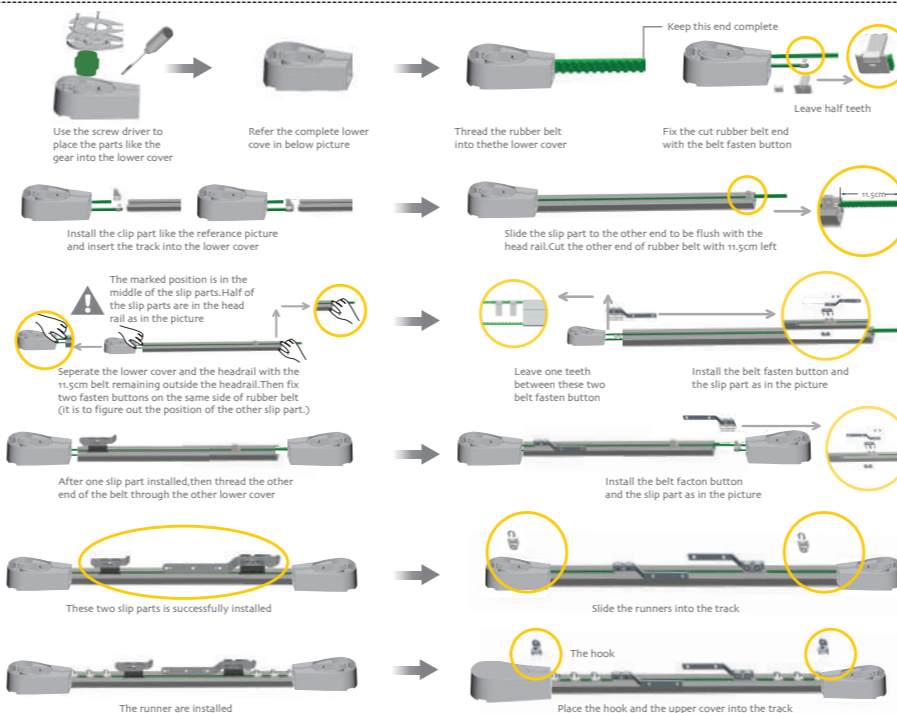
Type	DT72EV(45W)	DT72EV(75W)
Rated operating voltage(V)	AC230V	AC230V
Rated Torque(N.m)	0.8N.m	1.2N.m
Open/close speed(cm/s)	20cm/s	20cm/s
Emission frequency(MHZ)	433.925MHZ	433.925MHZ

## Motor Installation

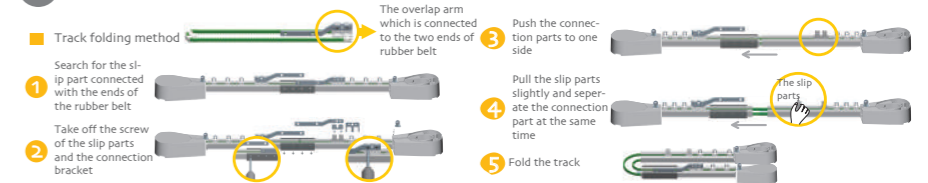
### 1 The joint assembly of track



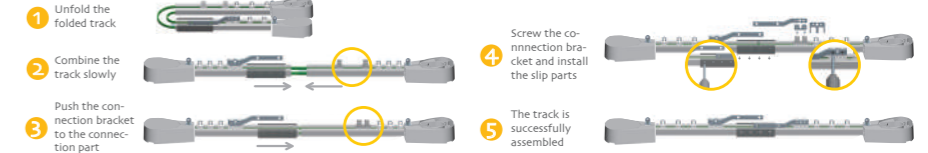
### 2 The assembly of rubber belt for curtain motor



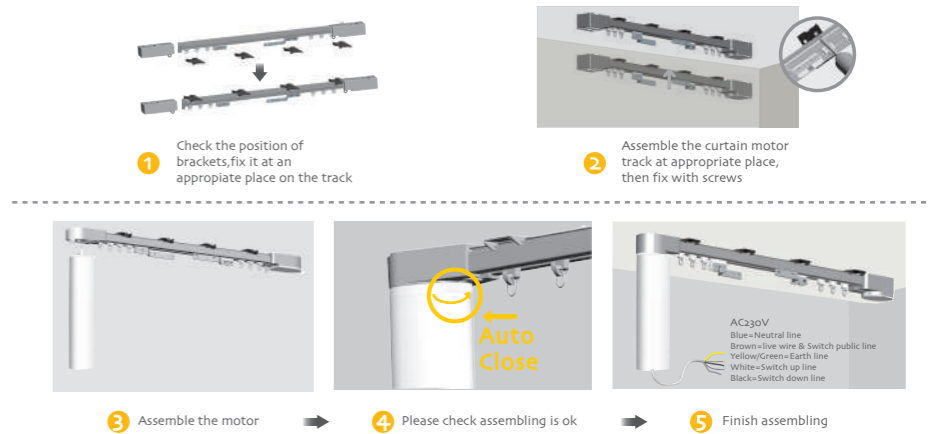
### 3 Folding method for joint track (for easy transit)



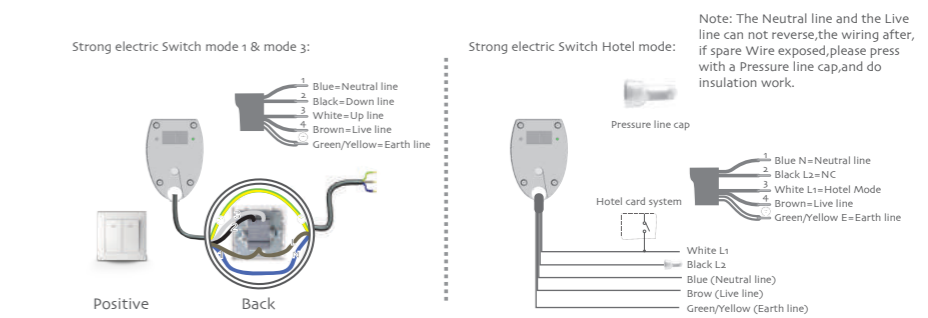
### Restoring the track



### 4 The installation for curtain motor and cable



### 5 Strong electric Switch installation of curtain motor



Note: Specific operation see back <Strong electric switch mode selection> action bar.

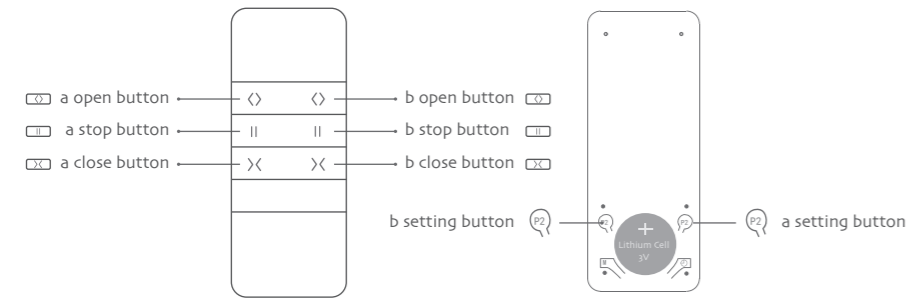
## Operation note

⚠ Please read the following precautions before use:

1. Operating:
  - ① The valid interval of the emitter button is 10s, the emitter will quit the set after 10s;
  - ② The LED flashes for hint, please do the next step after the hint.
2. Set limit position:
  - ① Every time you install the motor, first set after a curtain opened travel to work properly;
  - ② After setting, with power and memory function, after each power cycle required to open or close a recovery stroke;
  - ③ After replacing the track or cord to be removed for the trip, and then set itinerary.
3. When the motor running without any operation, the maximum running time is 4 minutes, it will stop automatically.
4. If the emitter lost, please set up again with new emitter.

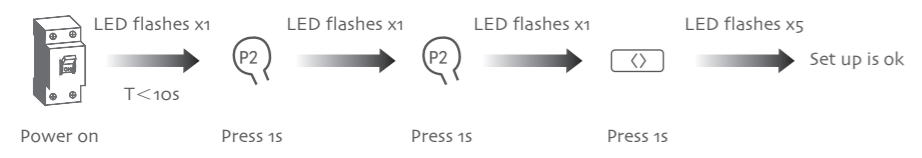


**Button specification**



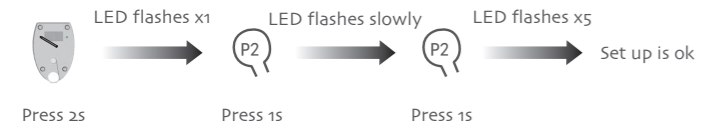
**1 Setting up**

**Method One**

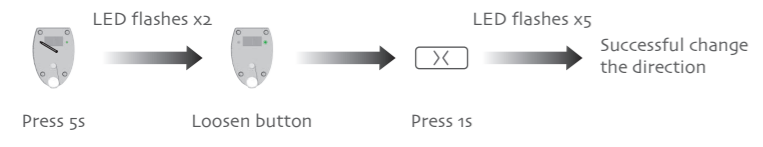


Note: ① If the motor has been matched the code, can't use this method; ② Press the open button, if the curtain closed, please perform the reverse of direction setting.

**Method Two**



**2 The reverse of direction setting**



**3 limit position**

**1, limit position**

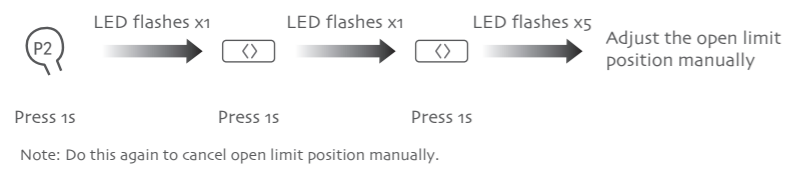


**2, Cancel the limit**



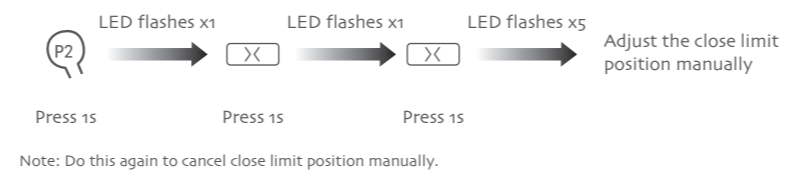
**4 Manual setting for limit**

**1, Adjust the open limit position manually**



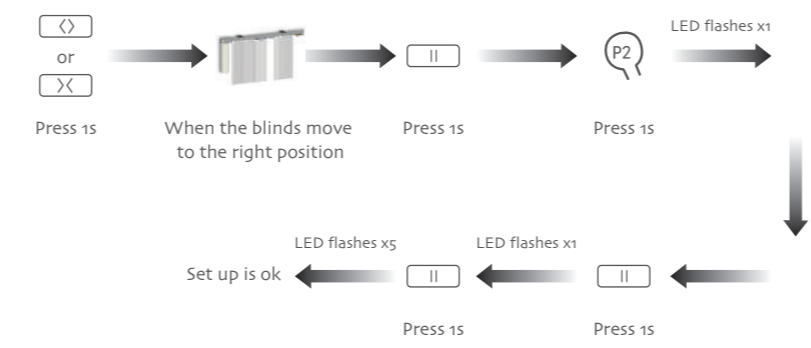
Note: Do this again to cancel open limit position manually.

**2, Adjust the close limit position manually**



Note: Do this again to cancel close limit position manually.

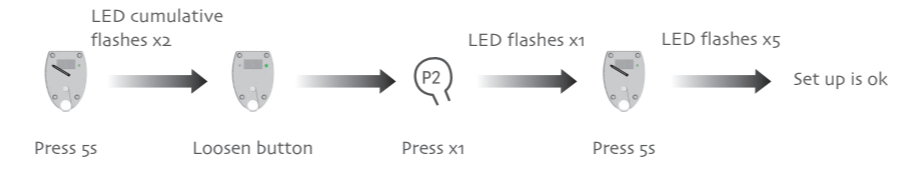
**5 The third limit position setting**



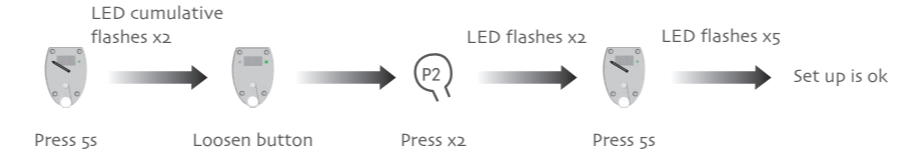
Note: Clear third limit point method and set the limit position; Long press the stop button for 2s, the motor moves to the third limit position automatically.

**6 Weak electric switch mode selection**

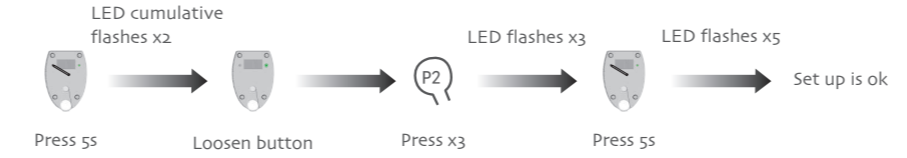
**1, Double-button reboundable switch mode**



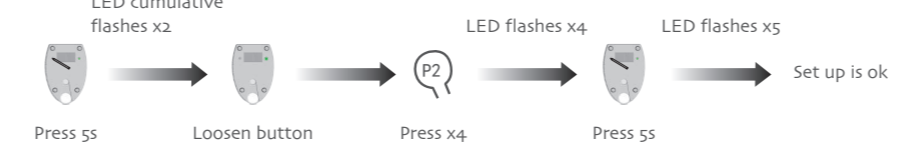
**2, Double-button not reboundable switch mode**



**3, DC246 switch mode**

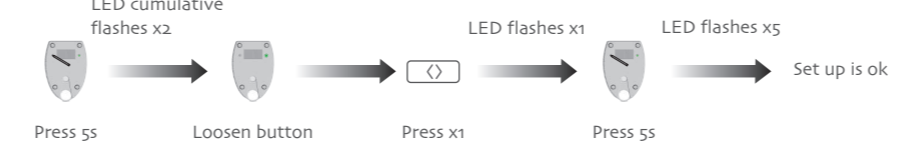


**4, Single-button cyclic switch mode**

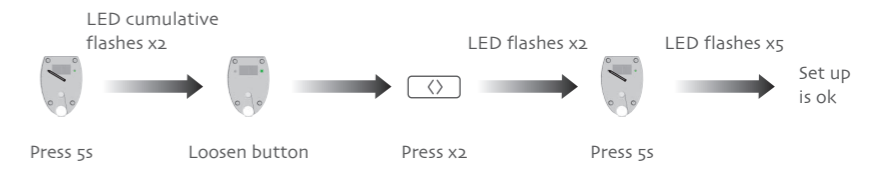


**7 Strong electric switch mode selection**

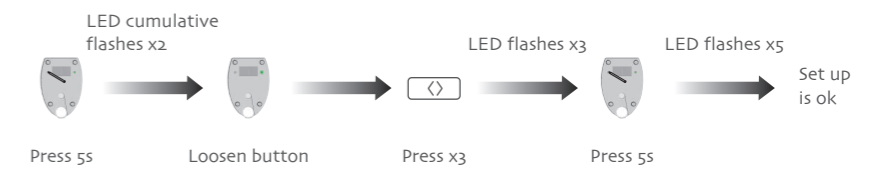
**1, Double-button not reboundable mode**



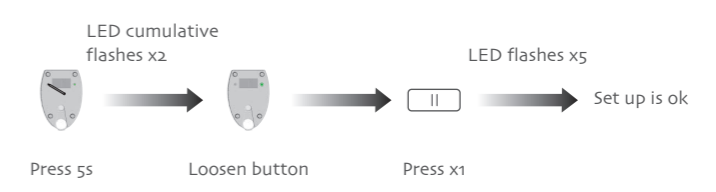
**2, Hotel mode**



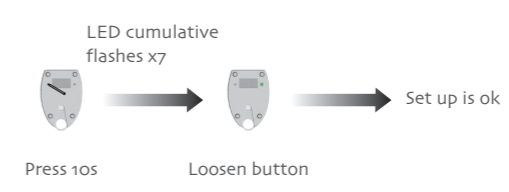
**3, Double-button reboundable mode**



**8 Touch-start**



**9 Restore factory settings**



**Fault and solution**

NUMBER	COMMON FAULTS	PROCESSING METHOD
1	The motor is not running	Check the power supply
2	Unable to control remote controller	Replacement of the remote control
3	Remote control on the contrary	Implement the reverse of direction setting
4	Remote switch on the contrary	Replacement switches line order
5	Cannot close	1, Check emitter's open button to ensure if it works with open function, if not, please change direction firstly; 2, check limit position;
6	Always hit or couldn't get to the edge	Cancel the limit, setting again
7	With the hand to pull, feeling stuck	Set the limit of the trip
8	Encounter obstacles will not stop	Check the screw used to fixed orbital